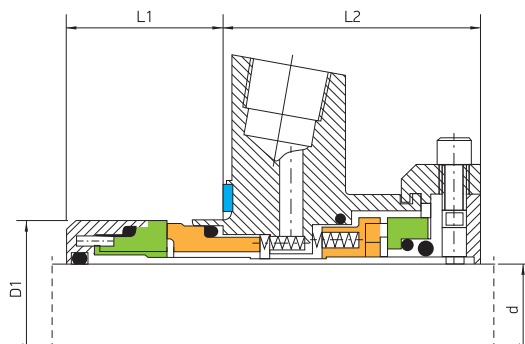
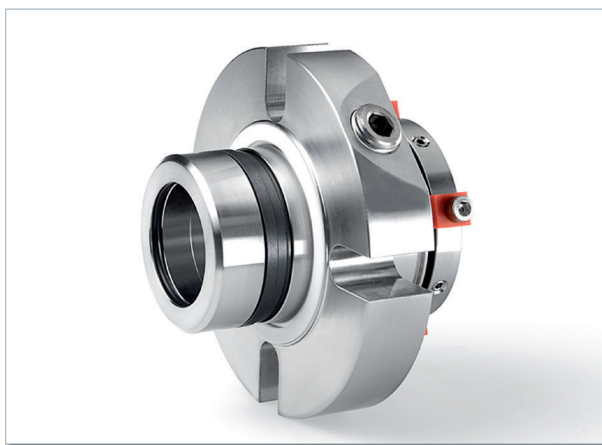


# CIERRES DE CARTUCHO GIROSEAL TIPO B DOBLE

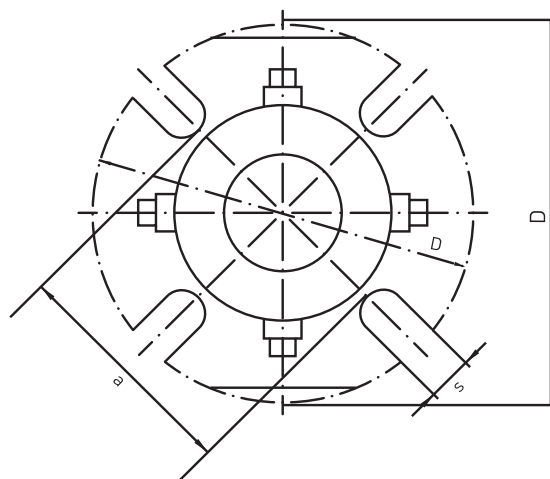


## PARÁMETROS DE TRABAJO

- Presión: 25 kg/cm<sup>2</sup>
- Temperatura: -200°C+260°C
- Velocidad: 35 m/s

## MATERIALES

- Caras de roce: Grafito, Silicio, Tungsteno
- Juntas tóricas: Buna, EPDM, FEP, FFKM, HNBR, Neopreno, PTFE y Vitón
- Muelles y otros: Inox, Titanio, Hastelloy.....



d		D	D1	L1	L2	a	s
mm	inch						
25	1.000	105	43.0	33.1	53.4	62.0	13.2
-	1.125a	105	43.5	33.1	53.4	65.0	13.2
28	1.125b	105	46.0	33.1	53.4	65.0	13.2
30	-	105	48.0	33.1	53.4	67.0	13.2
32	1.250	108	49.8	33.1	53.4	70.0	13.2
33	-	108	49.8	33.1	53.4	70.0	13.2
-	1.375a	113	49.8	33.1	53.4	72.0	13.2
35	1.375b	113	53.0	33.1	53.4	72.0	13.2
38	1.500	123	56.0	33.1	53.4	75.0	13.2
40	-	123	58.0	33.1	53.4	77.0	14.2
	1.625	123	59.4	33.1	53.4	78.5	14.2
42	-	133	60.5	33.1	53.4	80.0	14.2
43	-	133	60.5	33.1	53.4	80.0	14.2
45	1.750	138	62.5	33.1	53.4	82.0	14.2
48	1.875	138	65.6	33.1	53.4	85.0	14.2
50	2.000	148	68.0	33.1	53.4	87.0	14.2
53	2.125	148	72.0	33.1	53.4	97.0	18.0
55	-	148	73.0	33.1	53.4	92.0	18.0
-	2.250	157	75.20	33.1	53.4	100.0	18.0
60	2.375	157	78.0	33.1	53.4	102.0	18.0
-	2.500	163	81.6	33.1	53.4	106.0	18.0
65	2.625	163	84.8	33.1	53.4	109.0	18.0
70	2.750	178	93.0	33.1	53.4	118.0	18.0
-	2.875	185	96.8	44.1	63.9	126.0	18.0
75	3.000	190	100.0	44.1	63.9	129.0	18.0
	3.125	195	103.2	44.1	63.9	132.0	18.0
80	3.250	195	106.4	44.1	63.9	135.0	22.0
85	3.375	198	109.5	44.1	63.9	139.0	22.0
-	3.500	198	112.7	44.1	63.9	142.0	22.0
90	3.625	205	115.9	44.1	63.9	145.0	22.0
95	3.750	208	119.1	44.1	63.9	148.0	22.0
100	4.000	218	125.4	44.1	63.9	154.0	22.0